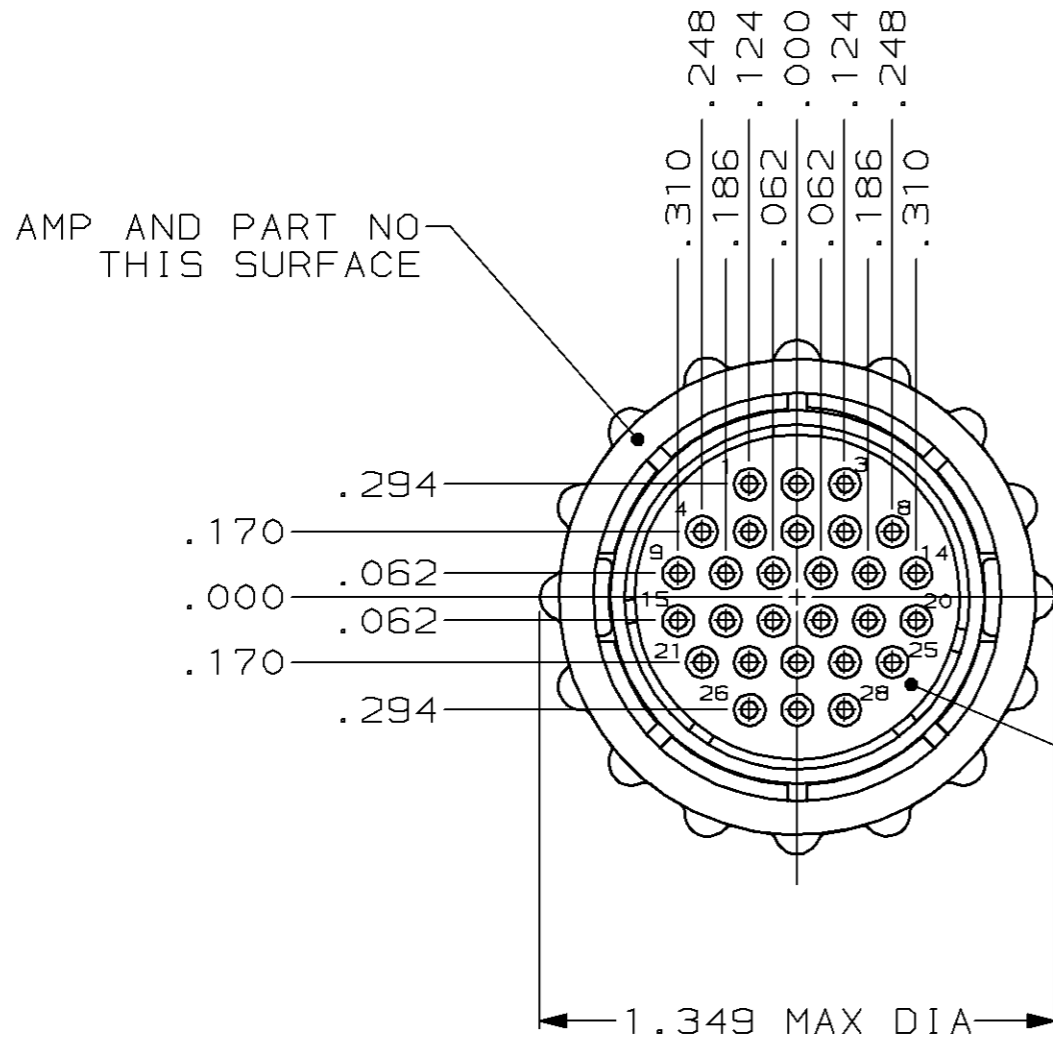


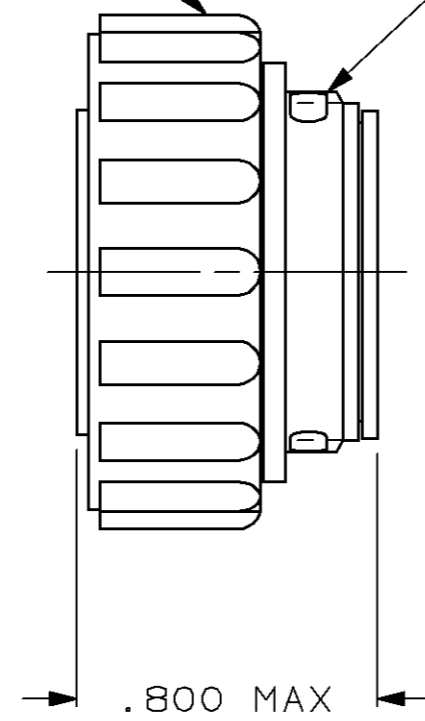
THIS DRAWING IS UNPUBLISHED. RELEASED FOR PUBLICATION, 19 .
 © COPYRIGHT 19 BY AMP INCORPORATED. ALL INTERNATIONAL RIGHTS RESERVED.

LOC	DIST	P	F	REVISIONS				
				ZONE	LTR	DESCRIPTION	DATE	APPD
FT	4				E	REDRAWN	4/1/91	-
					F	REV PER EC 0020-568-95	19 JUL 95	AF
					G	REV PER EC 0320-244-97	06 OCT 97	KD



POLYESTER, BLACK

GLASS FILLED NYLON, 6/6, BLACK



MATING FACE

206126-1
 PART NUMBER

- CONTACT CAVITIES IDENTIFIED BY CHARACTERS ON FRONT AND REAR FACES OF CONNECTOR.
- WILL ACCEPT (28) SIZE 20 SOCKET CONTACTS.

DO NOT SCALE PRINT, UNLESS SPECIFIED DIMENSIONS IN INCHES TOLERANCES ON: 2 PLC DEC ± - 3 PLC DEC ± .005 ANGLES ± -	DR 4/1/91 A. STAUB BG	AMP Incorporated Harrisburg, PA 17105-3608		
	CHK 7-23-92 W.G. LENKER			
	APPD 7-23-92 K. BEAVER	NAME		
	APPD 7-23-92 C. ROHDE	PLUG ASSEMBLY, FEED-THRU, SERIES 2, 17-28, CPC		
MATERIAL SEE CALLOUTS	PRODUCT SPEC 108-10024	SIZE	CAGE CODE	DRAWING NO
FINISH -	APPLICATION SPEC -	B	00779	206126
	WEIGHT -	SCALE	SHEET	
		2:1	1 OF 1	